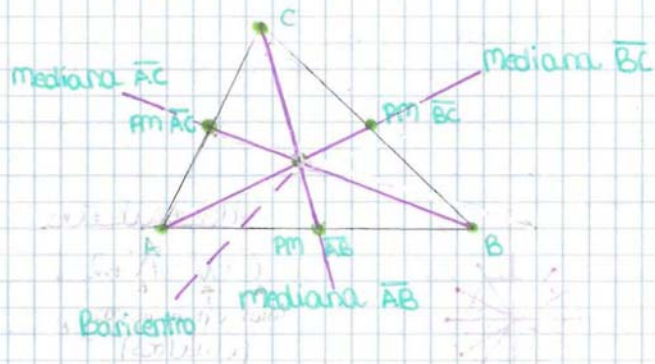


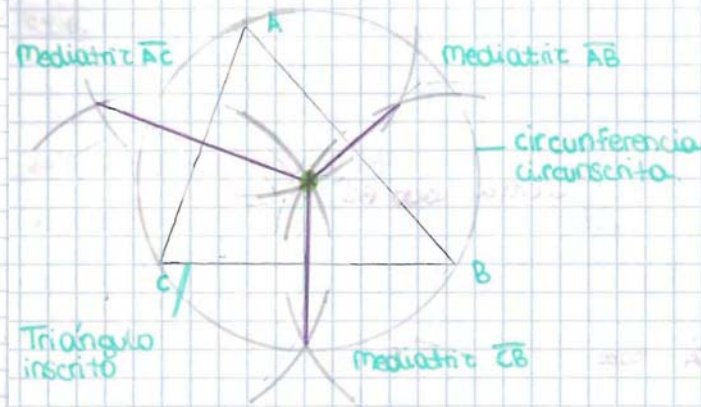
Puntos notables de un triángulo:

1. Medianas de un triángulo



-Mediana: is the line connecting the midpoint of one side of the triangle opposite the vertex.

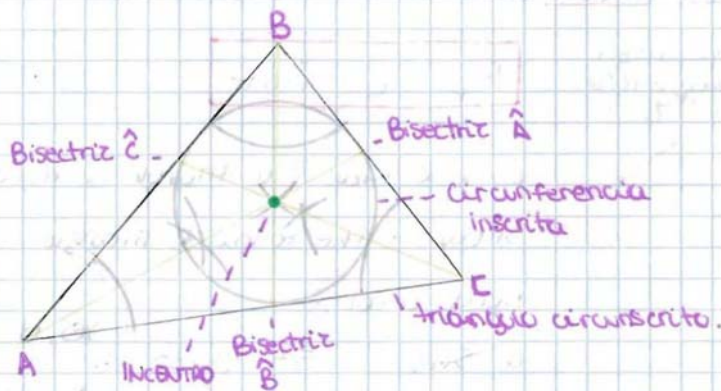
2. Mediatrices de un triángulo



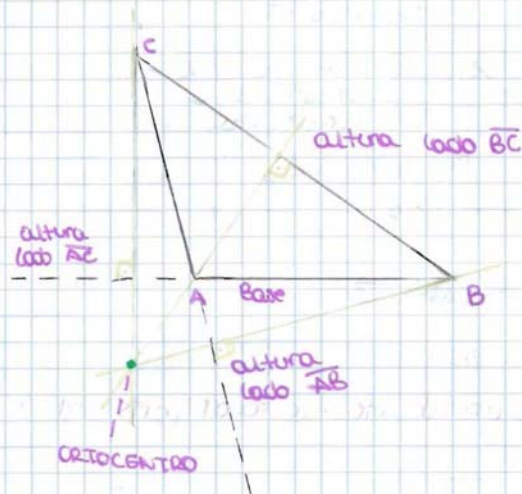
-Bisectriz: The line dividing one side into two equal parts and it is perpendicular to this.

Bisectriz de un triángulo:

3.



4.



-Height: the perpendicular straight line that goes through the opposite vertex.